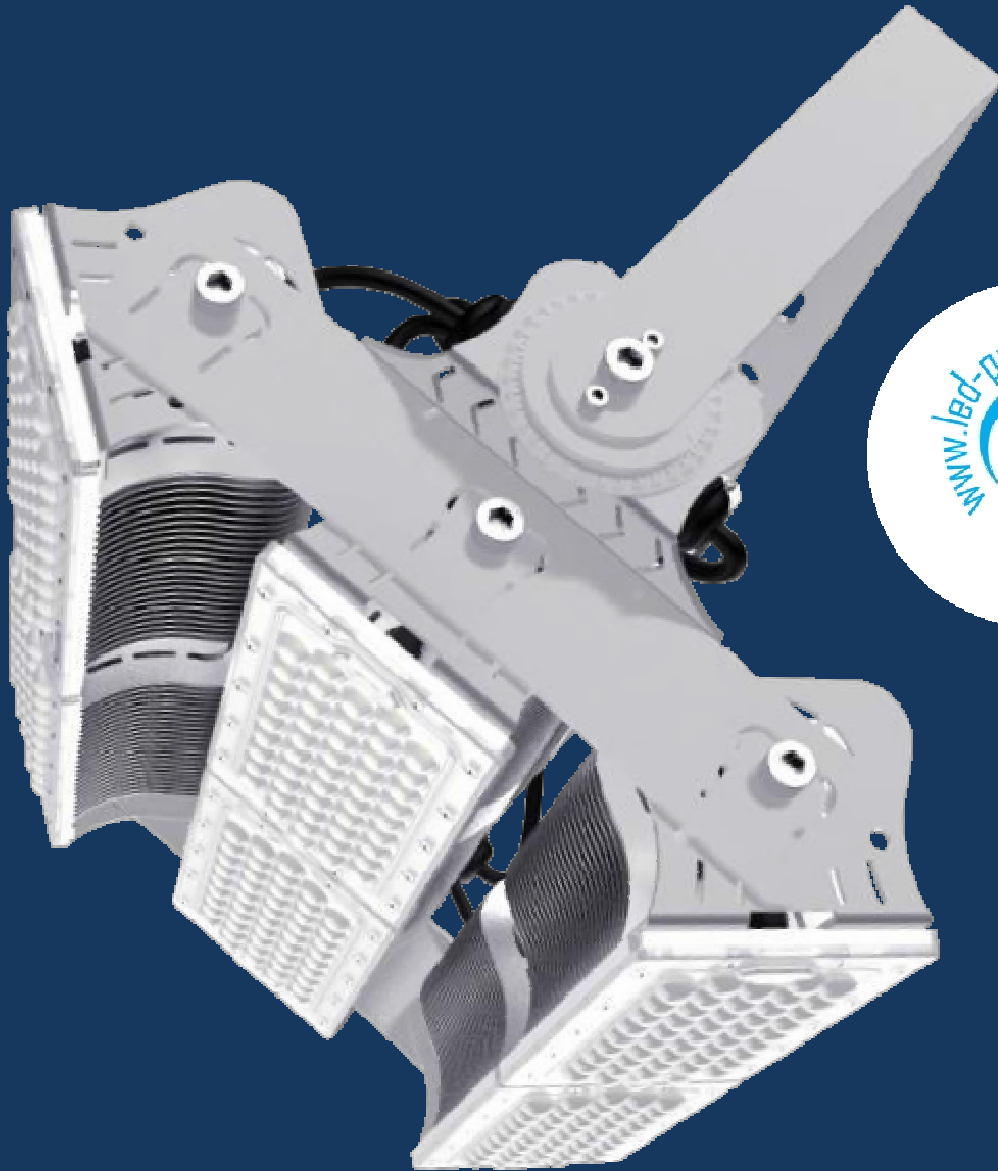


# Steelman Series

160LM/W Universal Flutlicht



Sportplatz



Mastbeleuchtung



Fabrikbeleuchtung

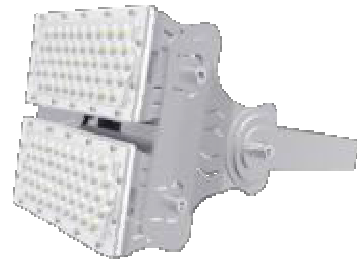


Gebäudebeleuchtung



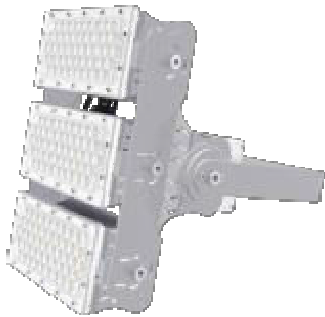
### Stellman 100W

16,000LM  
48PCS LED  
2.9kg ± 5%



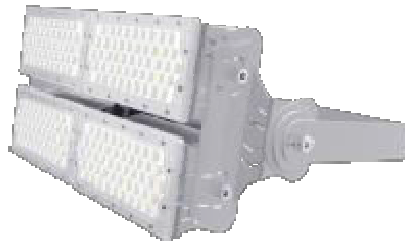
### Steelman 200W

32,000LM  
96PCS LED  
4.2kg ± 5%



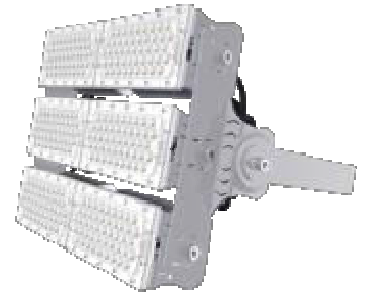
### Stellman 300W

48,000LM  
144PCS LED  
5.6kg ± 5%



### Stellman 400W

64,000LM  
192PCS LED  
7.4kg ± 5%



### Stellman 600W

96,000LM  
288PCS LED  
10.3kg ± 5%

#### Parameter

- **WATTAGE** 100/200/300/400/600W
- **DRIVER** MEANWELL
- **CRI** Ra>70
- **CCT** 2700-6500K
- **RATED VOLTAGE** AC 90-305V, 50/60Hz
- **POWER FACTOR** >0.95
- **IP GRADE** IP65
- **HEAT SINK** ALUMINUM COOLING FIN
- **OPERATING TEMP** -40°C~60°C



LAMP LUMINOUS FLUX	BEAM ANGLE	LED QUANTITY	LIGHT SOURCE
160LM/W	60°/90°/120°	48LEDS EACH MODULE	LUMILEDS
150LM/W	30°	48LEDS EACH MODULE	LUMILEDS
120LM/W	10°	48LEDS EACH MODULE	CREE

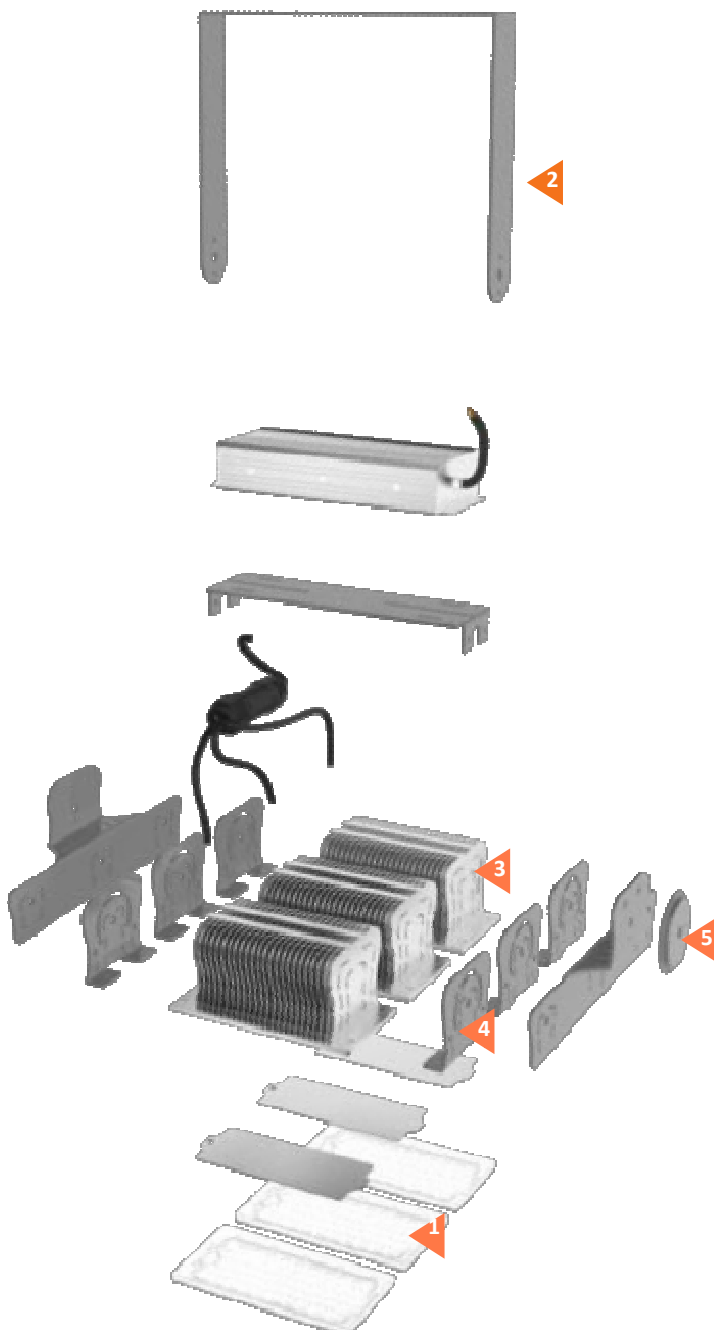
## Features



▲ Replaceable Optical Lens

▲ 360° Rotatable Holder

▲ High Efficient Heatsink



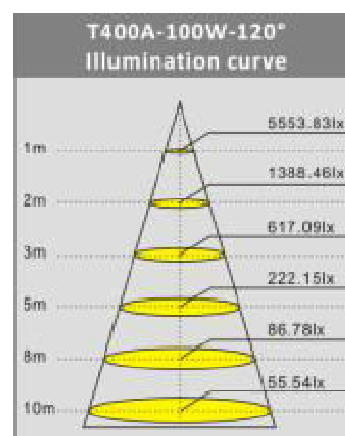
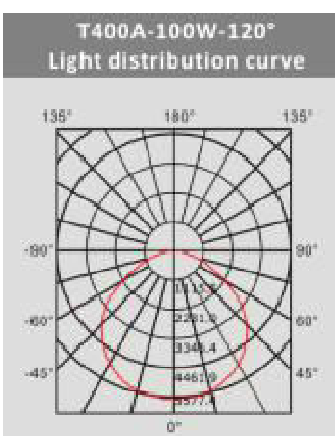
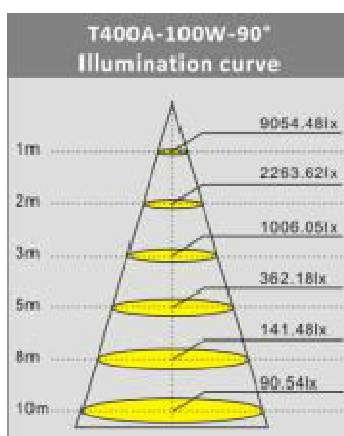
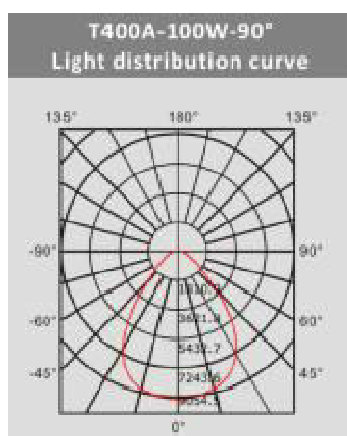
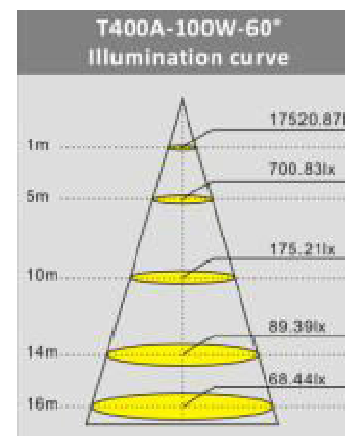
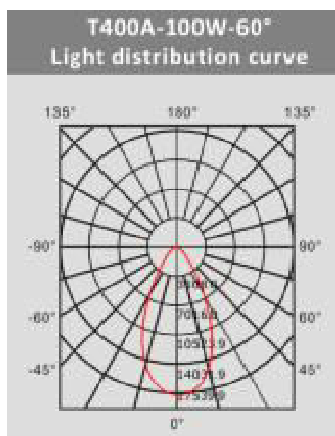
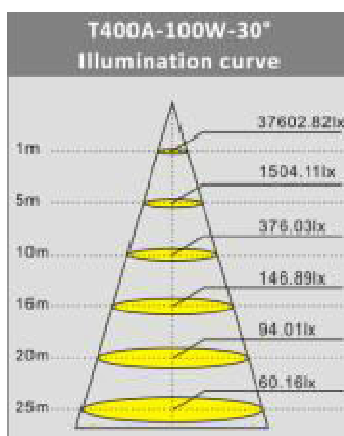
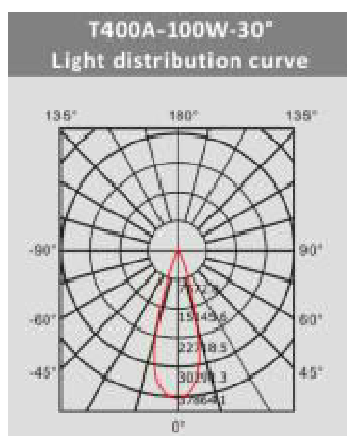
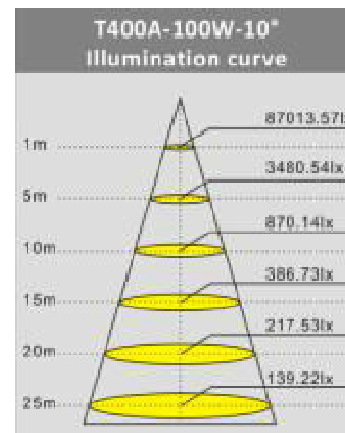
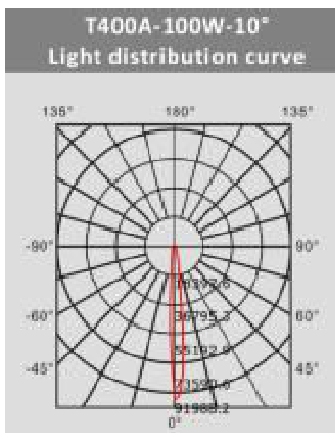
▲ Laser Scale Design



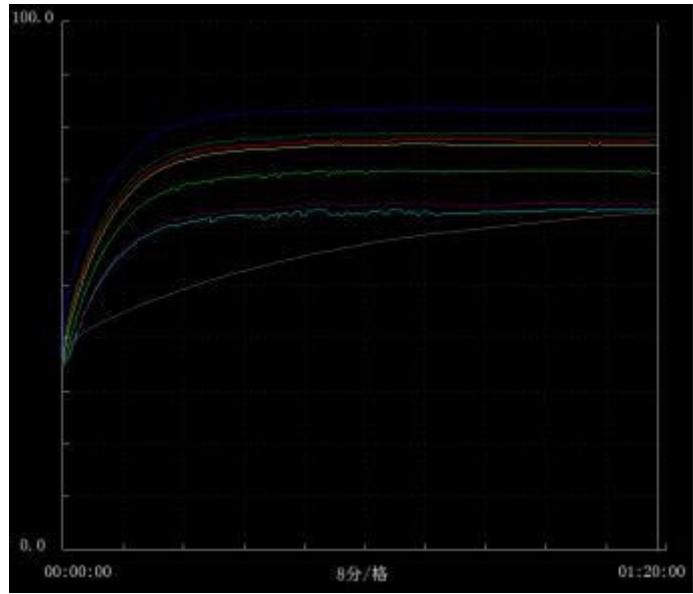
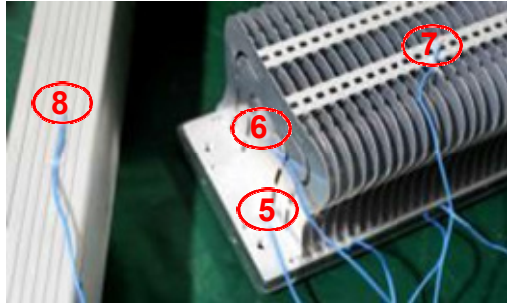
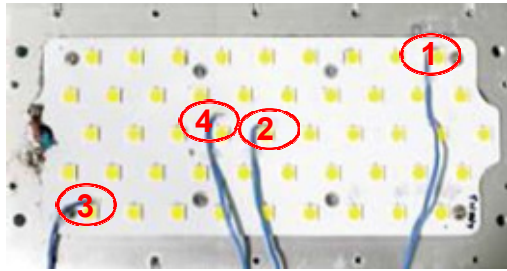
▲ Original Angle Scale Plate

## Professional Light Distribution

Multiple optical lens choices are available with angles including 10° / 30° / 60° / 90° / 120° to meet the requirements for professional light distribution and an extensive scope of applications.



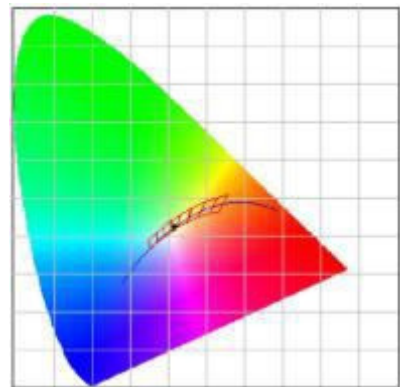
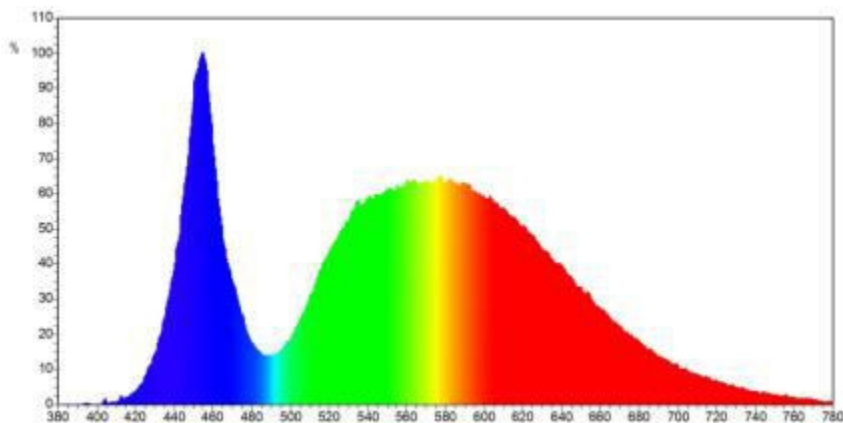
## Temperature Rise Test (CO-T400A-100W)



Test Point	Time(min)	00:00:00	00:30:00	01:00:00	01:30:00	02:00:00	02:30:00
CH1 LED		34.2	67.2	77.5	77.7	78.1	77.7
CH2 LED		35.1	67.9	78.8	78.9	78.8	78.8
CH3 LED		34.6	70.7	83.3	83.5	83.6	83.8
CH4 PCB Board		34.3	65.4	76.8	77.1	76.9	77.2
CH5 Heat sink		35.2	62.3	71.4	71.4	71.6	71.4
CH6 Heat sink		34.8	53.2	64.2	64.5	64.8	64.8
CH7 Heat sink		34.6	53.0	65.6	65.7	65.7	65.7
CH8 LED Driver		34.1	49.7	63.9	64.0	64.1	64.1



## System test report (CO-T400A-400W 5000K)



### Electrical parameters

Flux: 63876.5384 lm

I: 1874.2 mA

P: 157.642 lm/w

V: 216.20 V

P: 29591.06 mw

P: 405.200 w

PF: 0.9740



# Test

## UV Aging Test

The test time is about 30 days. After the test, the lamp work well, no discoloration appearance , no yellowing of the PC lens , no rust of the body.



## Waterproof Test

Every lamp will be tested the water-proof at least 2 hours before shipment. The efficient semiautomatic test line short the lead time.



## Salt Spray Test

The heat sink processed by oxidization and powder spraying so that it has good corrosion resistance.

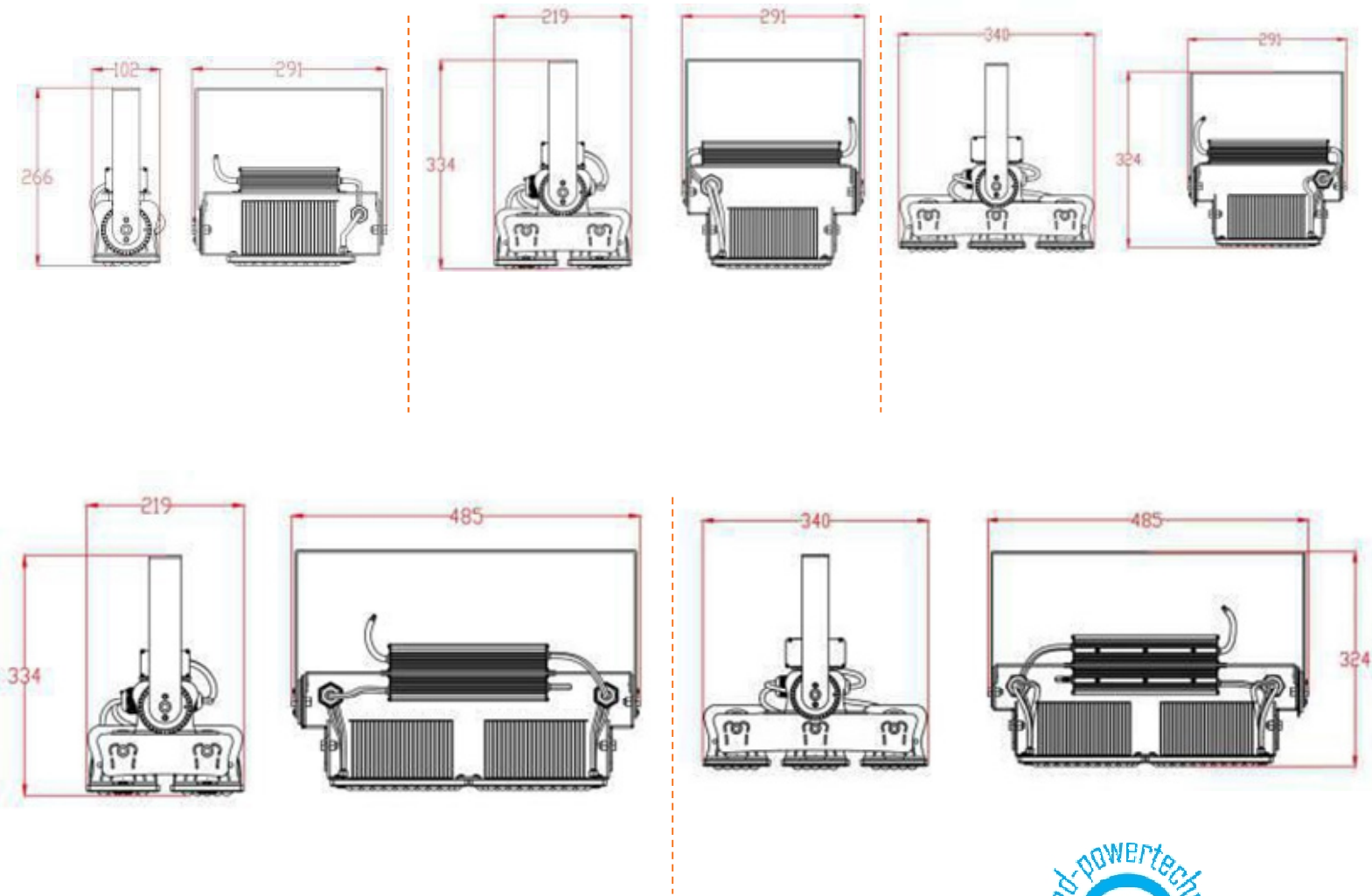


## High-Low Temperature Testing

The test equipment worked 8 hours, the highest temperature was upped to 60°C and the lowest temperature was downed to -40°C. This process was circulated on twice. The lamp still worked normally.



## Dimension



## Packing

Model	Size of Box	Weight of Box	Size of Carton	Gross Weight of Carton	Box PCS /Carton
Steelman-100W	32*13*29cm	3.5KG	72*36*63cm	36KG	10
Steelman -200W	30*25*33cm	5.1KG	53*34*73cm	21.5KG	4
Steelman -300W	41*34*23cm	6.7KG	71*44*50cm	27.5KG	4
Steelman -400W	52*25*33.5cm	7.8KG	55*53*36cm	18.2KG	2
Steelman -600W	53*41.5*24.5cm	11.9KG	56*44*52cm	24.6KG	2